

MSH2 Polyclonal Antibody

Description

Product type	Primary Antibody
Code	BT-AP05622
Host	Rabbit
Isotype	IgG
Size	20ul, 50ul, 100ul
Immunogen	The antiserum was produced against synthesized peptide derived from human MSH2. AA range:541-590
Mol wt	104743
Species reactivity	Human, Mouse, Rat
Clonality	Polyclonal
Recommended application	IHC-p, IF, ELISA
Concentration	1 mg/ml
Full name	MSH2 Antibody
Synonyms	MSH2; DNA mismatch repair protein Msh2; hMSH2; MutS protein homolog 2

This product is for research use only, not for use in human, therapeutic or diagnostic procedure.

Background

MSH2 is frequently mutated in hereditary nonpolyposis colon cancer (HNPCC). When cloned, it was discovered to be a human homolog of the E.coli mismatch repair gene mutS, consistent with the characteristic alterations in microsatellite sequences (RER+ phenotype) found in HNPCC. Two transcript variants encoding different isoforms have been found for this gene.

Recommended Dilution

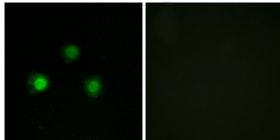
IHC: 1: 100 - 1: 300

IF: 1: 200 - 1: 1000

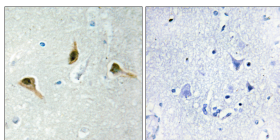
ELISA: 1: 20000

Not yet tested in other applications.

Images



Immunofluorescence analysis of HUVEC cells, using MSH2 Antibody. The picture on the right is blocked with the synthesized peptide.



Immunohistochemistry analysis of paraffin-embedded human brain tissue, using MSH2 Antibody. The picture on the right is blocked with the synthesized peptide.

Storage

-20°C for one year