

A-Myb Polyclonal Antibody

Description

Product type	Primary Antibody
Code	BT-AP00428
Host	Rabbit
Isotype	IgG
Size	20ul, 50ul, 100ul
Immunogen	The antiserum was produced against synthesized peptide derived from human MYB-A. AA range:231-280
Mol wt	85887
Species reactivity	Human, Mouse
Clonality	Polyclonal
Recommended application	WB, ELISA
Concentration	1 mg/ml
Full name	A-Myb Antibody
Synonyms	MYBL1; AMYB; Myb-related protein A; A-Myb; Myb-like protein 1

This product is for research use only, not for use in human, therapeutic or diagnostic procedure.

Background

MYBL1 (MYB Proto-Oncogene Like 1) is a Protein Coding gene. Diseases associated with MYBL1 include burkitt lymphoma. Among its related pathways are HTLV-I infection and Gene Expression. GO annotations related to this gene include chromatin binding and transcriptional activator activity, RNA polymerase II core promoter proximal region sequence-specific binding. An important paralog of this gene is SNAPC4.

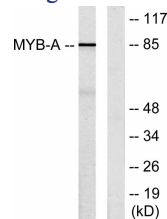
Recommended Dilution

WB: 1: 500 - 1: 2000

ELISA: 1: 10000

Not yet tested in other applications.

Images



Western blot analysis of lysates from LOVO cells, using MYB-A Antibody. The lane on the right is blocked with the synthesized peptide.

Storage

-20°C for one year