

AKAP 110 Polyclonal Antibody

Description

Product type	Primary Antibody
Code	BT-AP00319
Host	Rabbit
Isotype	IgG
Size	20ul, 50ul, 100ul
Immunogen	The antiserum was produced against synthesized peptide derived from human AKAP3. AA range:191-240
Mol wt	94736
Species reactivity	Human, Mouse
Clonality	Polyclonal
Recommended application	IF, ELISA
Concentration	1 mg/ml
Full name	AKAP 110 Antibody
Synonyms	AKAP3; AKAP110; SOB1; A-kinase anchor protein 3; AKAP-3; A-kinase anchor protein 110 kDa; AKAP 110; Cancer/testis antigen 82; CT82; Fibrous sheath protein of 95 kDa; FSP95; Fibrousheathin I; Fibroushe

This product is for research use only, not for use in human, therapeutic or diagnostic procedure.

Background

AKAP3 encodes a member of A-kinase anchoring proteins (AKAPs), a family of functionally related proteins that target protein kinase A to discrete locations within the cell. The A-kinase anchoring protein 3 is reported to participate in protein-protein interactions with the R-subunit of the protein kinase A as well as sperm-associated proteins. This protein is expressed in spermatozoa and localized to the acrosomal region of the sperm head as well as the length of the principal piece. It may function as a regulator of motility, capacitation, and the acrosome reaction.

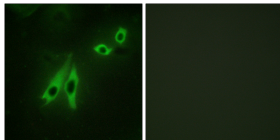
Recommended Dilution

IF: 1: 200 - 1: 1000

ELISA: 1: 10000

Not yet tested in other applications.

Images



Immunofluorescence analysis of NIH/3T3 cells, using AKAP3 Antibody. The picture on the right is blocked with the synthesized peptide.

Storage

-20°C for one year