

Lactoferrin Monoclonal Antibody(Q100)

Description

Product type	Primary Antibody
Code	BT-MCA0825
Host	Mouse
Isotype	IgG
Size	20ul, 50ul, 100ul
Immunogen	Synthetic Peptide of Lactoferrin
Mol wt	38178
Species reactivity	Human
Clonality	Monoclonal
Recommended application	IF, ICC, IHC-p, ELISA
Concentration	1 mg/ml
Full name	Lactotransferrin
Synonyms	LTF; LF; Lactotransferrin; Lactoferrin; Talalactoferrin

This product is for research use only, not for use in human, therapeutic or diagnostic procedure.

Background

This gene is a member of the transferrin family of genes and its protein product is found in the secondary granules of neutrophils. The protein is a major iron-binding protein in milk and body secretions with an antimicrobial activity, making it an important component of the non-specific immune system. The protein demonstrates a broad spectrum of properties, including regulation of iron homeostasis, host defense against a broad range of microbial infections, anti-inflammatory activity, regulation of cellular growth and differentiation and protection against cancer development and metastasis. Antimicrobial, antiviral, antifungal and antiparasitic activity has been found for this protein and its peptides. Alternatively spliced transcript variants encoding different isoforms have been found for this gene.

Recommended Dilution

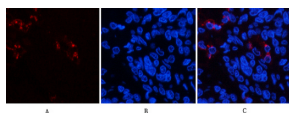
ELISA: 1:5000-10000

IF: 1:50-200

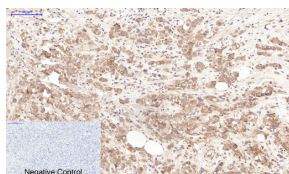
IHC: 1:50-300

Not yet tested in other applications.

Images



Immunofluorescence analysis of human-lung-cancer tissue. 1.Lactoferrin Monoclonal antibody(Q100) (red) was diluted at 1:200(4°C,overnight). 2. Cy3 labeled Secondary antibody was diluted at 1:300(room temperature, 50min).3. Picture B: DAPI(blue) 10min. Picture A:Target. Picture B: DAPI. Picture C: merge of A+B



Immunohistochemical analysis of paraffin-embedded Human-breast-cancer tissue. 1.Lactoferrin Monoclonal antibody(Q100) was diluted at 1:200(4°C,overnight). 2.Sodium citrate pH 6.0 was used for antibody retrieval(>98°C,20min). 3.Secondary antibody was diluted at 1:200(room temperature, 30min). Negative control was used by secondary antibody only.

Storage

-20°C for one year

501 Changsheng S Rd, Nanhu Dist, Jiaxing, Zhejiang, China

Tel: 86 21 31007137 | E-mail: save@bt-laboratory.com | www.bt-laboratory.com