

## CD21 Monoclonal Antibody(2C5)

### Description

<b>Product type</b>	Primary Antibody
<b>Code</b>	BT-MCA0287
<b>Host</b>	Mouse
<b>Isotype</b>	IgG
<b>Size</b>	20ul, 50ul, 100ul
<b>Immunogen</b>	Synthetic Peptide of CD21
<b>Mol wt</b>	112916
<b>Species reactivity</b>	Human,Mouse,Rat
<b>Clonality</b>	Monoclonal
<b>Recommended application</b>	IHC-P, IF, ICC
<b>Concentration</b>	1 mg/ml
<b>Full name</b>	Complement receptor type 2
<b>Synonyms</b>	CR2; C3DR; Complement receptor type 2; Cr2; Complement C3d receptor; Epstein-Barr virus receptor; EBV receptor; CD21

This product is for research use only, not for use in human, therapeutic or diagnostic procedure.

### Background

This gene encodes a membrane protein, which functions as a receptor for Epstein-Barr virus (EBV) binding on B and T lymphocytes. Genetic variations in this gene are associated with susceptibility to systemic lupus erythematosus type 9 (SLEB9). Alternatively spliced transcript variants encoding different isoforms have been found for this gene.

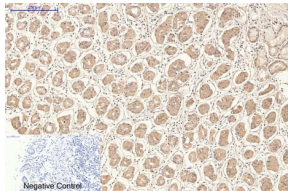
### Recommended Dilution

IF: 1:50-200

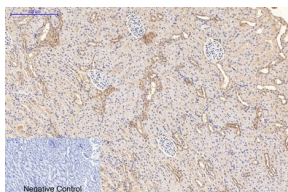
IHC: 1:200

Not yet tested in other applications.

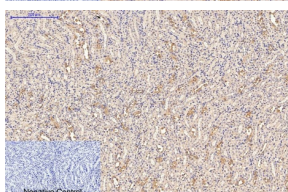
### Images



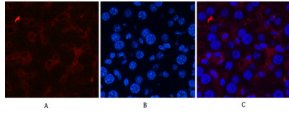
Immunohistochemical analysis of paraffin-embedded Human-stomach tissue. 1.CD21 Monoclonal antibody(2C5) was diluted at 1:200(4°C,overnight). 2.Sodium citrate pH 6.0 was used for antibody retrieval(>98°C,20min). 3.Secondary antibody was diluted at 1:200(room temperature, 30min). Negative control was used by secondary antibody only.



Immunohistochemical analysis of paraffin-embedded Rat-kidney tissue. 1.CD21 Monoclonal antibody(2C5) was diluted at 1:200(4°C,overnight). 2.Sodium citrate pH 6.0 was used for antibody retrieval(>98°C,20min). 3.Secondary antibody was diluted at 1:200(room temperature, 30min). Negative control was used by secondary antibody only.



Immunohistochemical analysis of paraffin-embedded Mouse-kidney tissue. 1.CD21 Monoclonal antibody(2C5) was diluted at 1:200(4°C,overnight). 2.Sodium citrate pH 6.0 was used for antibody retrieval(>98°C,20min). 3.Secondary antibody was diluted at 1:200(room temperature, 30min). Negative control was used by secondary antibody only.



Immunofluorescence analysis of Mouse-liver tissue. 1. CD21 Monoclonal antibody(2C5)(red) was diluted at 1:200(4°C, overnight). 2. Cy3 labeled Secondary antibody was diluted at 1:300(room temperature, 50min). 3. Picture B: DAPI(blue) 10min. Picture A: Target. Picture B: DAPI. Picture C: merge of A+B

### Storage

-20°C for one year

501 Changsheng S Rd, Nanhu Dist, Jiaxing, Zhejiang, China

Tel: 86 21 31007137 | E-mail: [save@bt-laboratory.com](mailto:save@bt-laboratory.com) | [www.bt-laboratory.com](http://www.bt-laboratory.com)