

## HSP90Beta Monoclonal Antibody(M2)

### Description

Product type	Primary Antibody
Code	BT-MCA0053
Host	Mouse
Isotype	IgG
Size	20ul, 50ul, 100ul
Immunogen	Synthetic Peptide of HSP90Beta
Mol wt	83133
Species reactivity	Human,Mouse,Rat
Clonality	Monoclonal
Recommended application	WB, IHC-p, IF, ICC
Concentration	1 mg/ml
Full name	Heat shock protein HSP 90-beta
Synonyms	HSP90AB1; HSP90B; HSPC2; HSPCB; Heat shock protein HSP 90-beta; HSP 90; Heat shock 84 kDa; HSP 84; HSP84

This product is for research use only, not for use in human, therapeutic or diagnostic procedure.

### Background

This gene encodes a member of the heat shock protein 90 family| these proteins are involved in signal transduction, protein folding and degradation and morphological evolution. This gene encodes the constitutive form of the cytosolic 90 kDa heat-shock protein and is thought to play a role in gastric apoptosis and inflammation. Alternative splicing results in multiple transcript variants. Pseudogenes have been identified on multiple chromosomes.

### Recommended Dilution

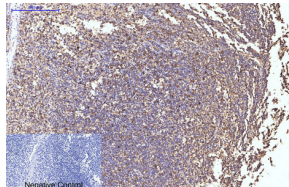
IF: 1:200

IHC: 1:50-300

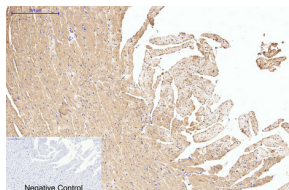
WB: 1:1000-3000

Not yet tested in other applications.

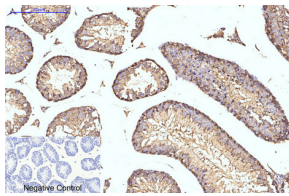
### Images



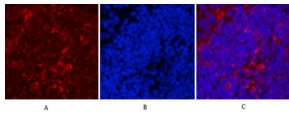
Immunohistochemical analysis of paraffin-embedded Human-Tonsil tissue. 1.HSP90Beta Monoclonal antibody(M2) was diluted at 1:200(4°C,overnight). 2.Sodium citrate pH 6.0 was used for antibody retrieval(>98°C,20min). 3.Secondary antibody was diluted at 1:200(room temperature, 30min). Negative control was used by secondary antibody only.



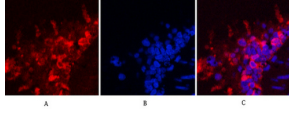
Immunohistochemical analysis of paraffin-embedded Rat-heart tissue. 1.HSP90Beta Monoclonal antibody(M2) was diluted at 1:200(4°C,overnight). 2.Sodium citrate pH 6.0 was used for antibody retrieval(>98°C,20min). 3.Secondary antibody was diluted at 1:200(room temperature, 30min). Negative control was used by secondary antibody only.



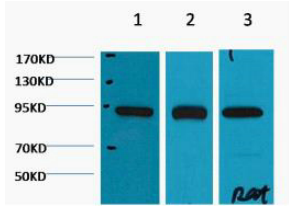
Immunohistochemical analysis of paraffin-embedded Mouse-testis tissue. 1.HSP90Beta Monoclonal antibody(M2) was diluted at 1:200(4°C,overnight). 2.Sodium citrate pH 6.0 was used for antibody retrieval(>98°C,20min). 3.Secondary antibody was diluted at 1:200(room temperature, 30min). Negative control was used by secondary antibody only.



Immunofluorescence analysis of Mouse-spleen tissue. 1.HSP90Beta Monoclonal antibody(M2)(red) was diluted at 1:200(4°C,overnight). 2. Cy3 labeled Secondary antibody was diluted at 1:300(room temperature, 50min).3. Picture B: DAPI(blue) 10min. Picture A:Target. Picture B: DAPI. Picture C: merge of A+B



Immunofluorescence analysis of Rat-lung tissue. 1.HSP90Beta Monoclonal antibody(M2)(red) was diluted at 1:200(4°C,overnight). 2. Cy3 labeled Secondary antibody was diluted at 1:300(room temperature, 50min).3. Picture B: DAPI(blue) 10min. Picture A:Target. Picture B: DAPI. Picture C: merge of A+B



Western blot analysis of 1) Hela, 2) Mouse Brain tissue, 3) Rat Brain tissue diluted at 1:2000.

### Storage

-20°C for one year

501 Changsheng S Rd, Nanhu Dist, Jiaxing, Zhejiang, China

Tel: 86 21 31007137 | E-mail: [save@bt-laboratory.com](mailto:save@bt-laboratory.com) | [www.bt-laboratory.com](http://www.bt-laboratory.com)