

## NSE2 Polyclonal Antibody

### Description

Product type	Primary Antibody
Code	BT-AP12036
Host	Rabbit
Isotype	IgG
Size	20ul, 50ul, 100ul
Immunogen	Synthesized peptide derived from part region of human protein
Mol wt	N/A
Species reactivity	Human, Rat, Mouse
Clonality	Polyclonal
Recommended application	WB, ELISA
Concentration	1 mg/ml
Full name	E3 SUMO-protein ligase NSE2
Synonyms	E3 SUMO-protein ligase NSE2 ;EC 6.3.2.-;MMS21 homolog:hMMS21;Non-structural maintenance of chromosomes element 2 homolog;Non-SMC element 2 homolog

This product is for research use only, not for use in human, therapeutic or diagnostic procedure.

### Background

E3 SUMO-protein ligase component of the SMC5-SMC6 complex, a complex involved in DNA double-strand breaks by homologous recombination. The complex may promote sister chromatid homologous recombination by recruiting the SMC1-SMC3 cohesin complex to double-strand breaks. Acts as a E3 ligase mediating SUMO attachment to various proteins such as SMC6L1 and TRAX, and maybe the cohesin components RAD21 and STAG2. SUMO protein-ligase activity is required for the prevention of DNA damage-induced apoptosis by facilitating DNA repair. pathway:Protein modification; protein sumoylation. PTM:Sumoylated, possibly via autsumoylation. Belongs to the NSE2 family. Contains 1 SP-RING-type zinc finger. subunit:Component of the SMC5-SMC6 complex which consists of SMC5, SMC6, NSMCE2/MMS21 and probably NSMCE1.

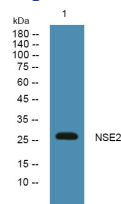
### Recommended Dilution

WB: 1: 500 - 1: 2000

ELISA: 1: 5000 - 1: 20000

Not yet tested in other applications.

### Images



Western blot analysis of lysates from SH-SY5Y cells, primary antibody was diluted at 1:1000, 4°C overnight

### Storage

-20°C for 1 year