

Myc-tag Polyclonal Antibody

Description

Product type	Primary Antibody
Code	BT-AP11601
Host	Rabbit
Isotype	IgG
Size	20ul, 50uL, 100ul
Immunogen	Myc synthetic peptide conjugated to KLH.
Mol wt	N/A
Species reactivity	Species independent
Clonality	Polyclonal
Recommended application	WB, ELISA
Concentration	1 mg/ml
Full name	Myc-Tag
Synonyms	Myc-Tag; c Myc; c Myc Epitope Tag; c Myc Tag; Myc Epitope Tag; Myc proto-oncogene protein; Transcription factor p64

This product is for research use only, not for use in human, therapeutic or diagnostic procedure.

Background

Myc tag is a polypeptide protein tag derived from the c-myc gene product that can be added to a protein. It can help to separate recombinant, overexpressed protein from wild type protein expressed by the host organism. Myc Tag also can be used to isolate protein complexes with multiple subunits. Myc Tag Antibody can be used in various immunoassays, such as ELISA, Western blotting, immunoprecipitation, immunofluorescence, and more.

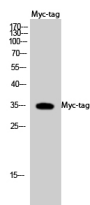
Recommended Dilution

WB: 1: 1000 - 1: 3000

ELISA: 1: 20000

Not yet tested in other applications.

Images



Western Blot analysis using Myc-tag Polyclonal Antibody against HEK293 cells transfected with vector overexpressing Myc tag (1) and untransfected (2). Secondary antibody was diluted at 1:20000

Storage

-20°C for 1 year