

ACAT-1 Polyclonal Antibody

Description

Product type	Primary Antibody
Code	BT-AP00142
Host	Rabbit
Isotype	IgG
Size	20ul, 50ul, 100ul
Immunogen	The antiserum was produced against synthesized peptide derived from human ACAT1. AA range:221-270
Mol wt	45200
Species reactivity	Human, Mouse, Rat
Clonality	Polyclonal
Recommended application	WB, IHC-p, ELISA
Concentration	1 mg/ml
Full name	ACAT-1 Antibody
Synonyms	ACAT1; ACAT; MAT; Acetyl-CoA acetyltransferase; mitochondrial; Acetoacetyl-CoA thiolase; T2

This product is for research use only, not for use in human, therapeutic or diagnostic procedure.

Background

ACAT1 encodes a mitochondrially localized enzyme (acetyl-CoA acetyltransferase 1) that catalyzes the reversible formation of acetoacetyl-CoA from two molecules of acetyl-CoA. Defects in ACAT1 are associated with 3-ketothiolase deficiency, an inborn error of isoleucine catabolism characterized by urinary excretion of 2-methyl-3-hydroxybutyric acid, 2-methylacetoacetic acid, tiglylglycine, and butanone.

Recommended Dilution

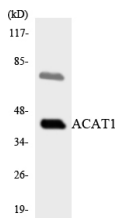
WB: 1: 500 - 1: 2000

IHC: 1: 100 - 1: 300

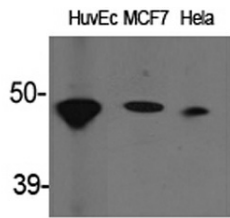
ELISA: 1: 40000

Not yet tested in other applications.

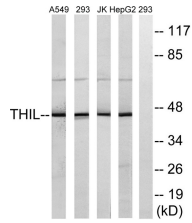
Images



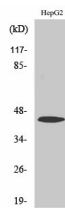
Western blot analysis of the lysates from HepG2 cells using ACAT1 antibody.



Western Blot analysis of various cells using ACAT-1 Polyclonal Antibody



Western blot analysis of lysates from HepG2, Jurkat, 293, and A549 cells, using ACAT1 Antibody.
The lane on the right is blocked with the synthesized peptide.



Western Blot analysis of A549 cells using ACAT-1 Polyclonal Antibody

Storage

-20°C for one year

501 Changsheng S Rd, Nanhu Dist, Jiaxing, Zhejiang, China

Tel: 86 21 31007137 | E-mail: save@bt-laboratory.com | www.bt-laboratory.com