

Neuroglycan C Polyclonal Antibody

Description

Product type	Primary Antibody
Code	BT-AP05928
Host	Rabbit
Isotype	IgG
Size	20ul, 50ul, 100ul
Immunogen	The antiserum was produced against synthesized peptide derived from human CSPG5. AA range:211-260
Mol wt	60058
Species reactivity	Human, Mouse, Rat
Clonality	Polyclonal
Recommended application	WB, ELISA
Concentration	1 mg/ml
Full name	Neuroglycan C Antibody
Synonyms	CSPG5; CALEB; NGC; Chondroitin sulfate proteoglycan 5; Acidic leucine-rich EGF-like domain-containing brain protein; Neuroglycan C

This product is for research use only, not for use in human, therapeutic or diagnostic procedure.

Background

Chondroitin sulfate proteoglycan 5 encoded by CSPG5 is a proteoglycan that may function as a neural growth and differentiation factor. Several transcript variants encoding different isoforms have been found for this gene.

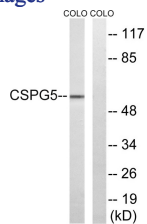
Recommended Dilution

WB: 1: 500 - 1: 2000

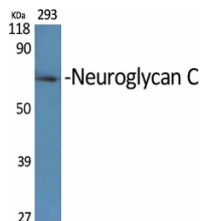
ELISA: 1: 40000

Not yet tested in other applications.

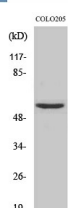
Images



Western blot analysis of lysates from COLO and HeLa cells, using CSPG5 Antibody. The lane on the right is blocked with the synthesized peptide.



Western Blot analysis of various cells using Neuroglycan C Polyclonal Antibody



Western Blot analysis of HeLa cells using Neuroglycan C Polyclonal Antibody

Storage

-20°C for one year

501 Changsheng S Rd, Nanhu Dist, Jiaxing, Zhejiang, China

Tel: 86 21 31007137 | E-mail: save@bt-laboratory.com | www.bt-laboratory.com