

VEGF-B Polyclonal Antibody

Description

Product type	Primary Antibody
Code	BT-AP09505
Host	Rabbit
Isotype	IgG
Size	20ul, 50ul, 100ul
Immunogen	The antiserum was produced against synthesized peptide derived from human VEGFB. AA range:91-140
Mol wt	21602
Species reactivity	Human, Mouse, Rat
Clonality	Polyclonal
Recommended application	WB, IHC-p, ELISA
Concentration	1 mg/ml
Full name	VEGF-B Antibody
Synonyms	VEGFB; VRF; Vascular endothelial growth factor B; VEGF-B; VEGF-related factor; VRF

This product is for research use only, not for use in human, therapeutic or diagnostic procedure.

Background

VEGFB encodes a member of the PDGF (platelet-derived growth factor)/VEGF (vascular endothelial growth factor) family. The VEGF family members regulate the formation of blood vessels and are involved in endothelial cell physiology. This member is a ligand for VEGFR-1 (vascular endothelial growth factor receptor 1) and NRP-1 (neuropilin-1). Studies in mice showed that this gene was co-expressed with nuclear-encoded mitochondrial genes and the encoded protein specifically controlled endothelial uptake of fatty acids. Alternatively spliced transcript variants encoding distinct isoforms have been identified.

Recommended Dilution

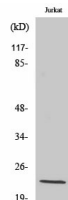
WB: 1: 500 - 1: 2000

IHC: 1: 100 - 1: 300

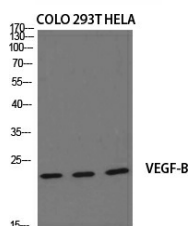
ELISA: 1: 20000

Not yet tested in other applications.

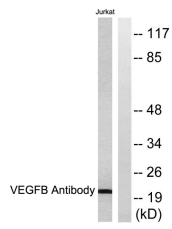
Images



Western Blot analysis of Jurkat cells using VEGF-B Polyclonal Antibody diluted at 1:2000. Secondary antibody was diluted at 1:20000



Western Blot analysis of various cells using VEGF-B Polyclonal Antibody diluted at 1:2000. Secondary antibody was diluted at 1:20000



Western blot analysis of lysates from Jurkat cells, using VEGFB Antibody. The lane on the right is blocked with the synthesized peptide.

Storage

-20°C for one year

501 Changsheng S Rd, Nanhu Dist, Jiaxing, Zhejiang, China

Tel: 86 21 31007137 | E-mail: save@bt-laboratory.com | www.bt-laboratory.com